

IPCallBox Central DASS II Protocol Converter



The **IPCallBox Central DASS II** Protocol Converter provides unequalled cost versus performance capability for the support of legacy DASS II lines or PBX with VoIP Services or newer EuroISDN lines.

Designed to interface between an ISDN30 (DASS II) line or Telephone System and an ISDN30e (EuroISDN) line or Telephone System it provides a complete solution for the problems of updating or replacing older Telephone System installations.

The **IPCallBox Central DASS II** Protocol Converter can also be optionally upgraded to support VoIP services allowing older DASS II Telephone System installations access to VoIP based enterprise networks or alternative VoIP based carriers.

The **IPCallBox Central DASS II** Protocol Converter can also be used to support IP Telephone System installations that wish to use existing DASS II ISDN lines for inbound and outbound traffic.

Features and Benefits

- Early media connection option permits full use of "in-band signalling" on DASS II lines.
- Ready to go configuration for most DASS II/ EuroISDN Conversion applications.
- Supports SIP & H.323 Protocol for maximum compatibility with many other VoIP gateways and soft

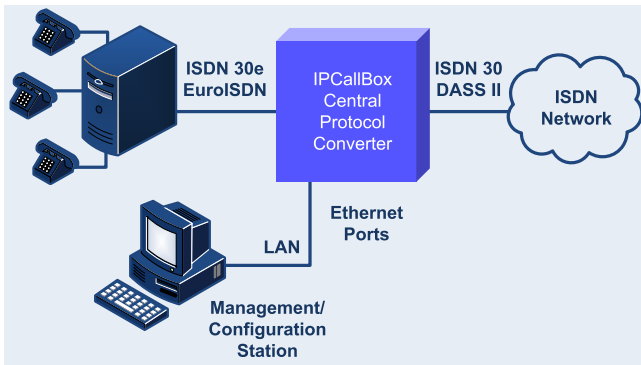


switches.

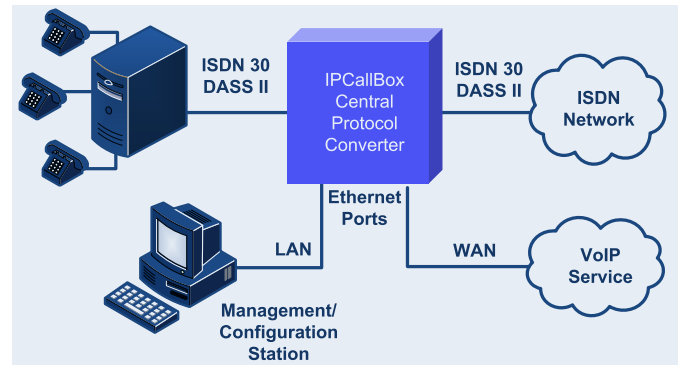
- Built in routing table permits stand-alone operation without SIP proxy or H.323 gatekeeper
- Multiple SIP/H.323 destinations permits simultaneous company wide and worldwide call delivery.
- Built-in IP router with NAT and DHCP server gives "one box" solution for voice and data communications from remote sites.
- SNMP management and full remote configuration and monitoring facilitates easy deployment and maintenance.
- Full remote diagnostics including real time protocol logging and test call capabilities
- Unit can be desk , wall or rack mounted (19" Rack Shelf available)

The **IPCallBox Central DASS II** Protocol Converter is fitted with 120 ohm twisted pair RJ45 connectors as standard . To interface to DASS II 75 Ohm Coax connectors a suitable balun is required.

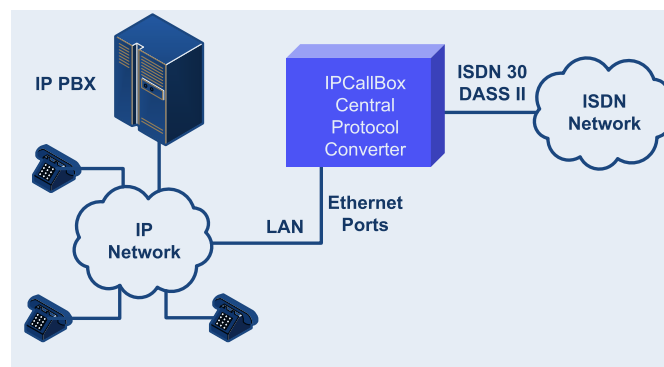
IPCallBox Central DASS II Protocol Converter



ISDN Protocol Converter



DASS II-VoIP Gateway



DASS II-IP PBX Gateway

ISDN Interfaces	1 x NT Interface (RJ45) , 1 x TE Interface (RJ45)
LAN Interfaces	1 x LAN Ethernet 10/100 Mbps
WAN Interfaces	1 x WAN Ethernet 10/100 Mbps
Local Management	IP, Serial Interface V.24/V.28 via RJ-12 or Telnet based through LAN interface
Protocols supported	Q.931 Euro-ISDN, DASS II, TCP/IP; UDP/IP; RTP; PPP; HTTP, Telnet, SNMP, RIP1, RIP2, NAT, DHCP Server & Client, (with Optional DSPs) SIP/ H.323; G.711 A-Law, u-Law; G.729A; G.723.1; H.225.0; H.245, H.235 Security,T.38 Fax support,
Other Features	<ul style="list-style-type: none"> • Call Detail Records Output over IP , • Automatic call failover between multiple destinations/interfaces. • Support for dynamic IP path switching in the event of IP path failure • Voice prioritisation for QoS support • Built in call test facilities including audio quality monitoring
Power	External power supply to suit local power outlets (7.5 watts)
Size	220mm (w) x 222mm(d) x 37mm (h) Wall or desk or Rack mounting, 19" rack shelf available
Voice Call Routes	>1000 static destination gateways /routing entries can be stored and can operate with multiple gatekeepers simultaneously.
Support Tools	Java based LAN management station and Graphical routing configuration tools
Remote Management	Fully featured central site management application available